



GENESIS  
LC-150S

FDA Class II Medical Device<sup>1</sup>

GENESIS  
LC-150M

Sitting Pretty™

# Genesis Collection

• • • •

Pride Mobility® began in 1986 as a lift chair manufacturer exclusively, and the **Genesis Collection** is an ode to our humble origins. Available in small and medium sizes, you'll experience the comfortable Sophie fabric, available in four unique colors – Latte, Sapphire, Shale, and Cabernet. For an additional cost, you can choose our luxurious Lexis Vinyl fabric in Chestnut.

Kick back, relax, and experience total comfort with the Genesis Collection.

[PRIDEMOBILITY.COM](http://PRIDEMOBILITY.COM)



# Genesis Collection

Model	LC-150S	LC-150M
Size	Small	Medium
User Height	5'3" & under	5'4" - 5'9"
Weight Capacity	325 lbs.	325 lbs.
Seat-to-Floor	18"	20"
Seat Depth	18"	20"
Seat Width	20"	22"
Top of Back to Seat	24"	26"
Fully Padded Chaise	Yes	Yes
Seating Type	Sinous Spring	Sinous Spring
Distance from Wall	17"	18.5"
Overall Width	32"	33"
Total Weight	111 lbs.	116 lbs.
Warranty	2-year Limited	2-year Limited
Position Type	Traditional 3-position	Traditional 3-position

## FEATURES

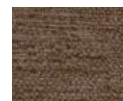
- Hand control with magnetic holder on both sides
- Easy-to-use toggle hand control
- Traditional three-position lift recliner with back and chaise working in tandem
- Integrated battery backup
- Chaise pad design fully supports the legs to eliminate pressure points
- Available in Small and Medium sizes
- Sophie fabrics (Latte, Sapphire, Cabernet, & Shale) and Lexis Vinyl fabric (Chestnut)
- **Small:** 325 lb. capacity / 20" seat width (5'3" height and below recommended)
- **Medium:** 325 lb. capacity / 22" seat width (5'4" to 5'9" height recommended)
- 2-Year Limited Warranty

## OPTIONS & ACCESSORIES

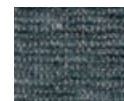
- Lithium battery backup
- Head and arm covers
- Non-skid leg levelers
- Cleaning kit

## FABRIC OPTIONS

### Sophie Fabrics



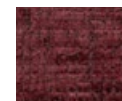
Latte



Sapphire

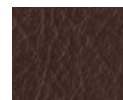


Shale



Cabernet

### Lexis Vinyl<sup>2</sup>



Chestnut



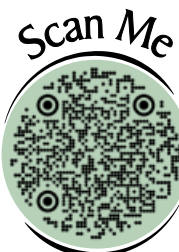
FDA Class II  
Medical Device<sup>1</sup>

Sitting Pretty™



pridemobility.com

800.800.8586



1) Genesis Collection lift chairs are FDA Class II Medical Devices designed to aid individuals with mobility impairments.

2) Additional charges will apply for this fabric.

**NOTE:** Measurements may vary +/- 1". The information contained herein is correct at the time of publication; we reserve the right to alter specifications without prior notice.





**EVOLUTION**  
LC-435L



**Storage  
Compartment**

*Only available on small,  
medium, and large sizes*

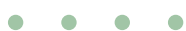


**Cup  
Holder**

*Only available on small,  
medium, and large sizes*

Sitting Pretty™

# Evolution Collection



**PRIDEMOBILITY.COM**

Evolution Collection lift chairs are FDA Class II Medical Devices  
designed to aid individuals with mobility impairments.

While Pride Mobility® began exclusively as a lift chair manufacturer in 1986, our company has never stopped innovating, which makes the **Evolution Collection** a fitting name. This collection fits loungers of all kinds, with sizes ranging from small to XXL.

The small, medium, and large sizes feature a cup holder and storage compartment in the pull-out arms, with USB-A and USB-C chargers in the storage area to keep you connected. These sizes also offer an enhanced three-position experience, which provides additional resting positions.

# Evolution Collection



Model	LC-435S	LC-435M	LC-435L	LC-435XL	LC-435XXL
Size	Small	Medium	Large	X-Large	XX-Large
User Height	5'3" & under	5'4" - 5'9"	5'9" - 6'	5'8" - 6'1"	5'8" - 6'1"
Weight Capacity	400 lbs.	400 lbs.	400 lbs.	500 lbs.	600 lbs.
Seat-to-Floor	18"	20"	22"	20"	20"
Seat Depth	18"	20"	22"	22"	22"
Seat Width	20"	22"	24"	26"	30"
Top of Back to Seat	24"	26"	28"	29"	29"
Fully Padded Chaise	Yes	Yes	Yes	Yes	Yes
Seating Type	Coil Pocketed Spring	Coil Pocketed Spring	Coil Pocketed Spring	Total Comfort	Total Comfort
Distance from Wall	16"	16.5"	19"	19"	19"
Overall Width	38.5"	40.5"	42"	39.5"	43"
Total Weight	136 lbs.	141 lbs.	146 lbs.	187 lbs.	196 lbs.
Warranty	7-year Pro-rated	7-year Pro-rated	7-year Pro-rated	7-year Pro-rated	7-year Pro-rated
Made in America of foreign and domestic parts	No	No	No	Yes	Yes
Position Type	Enhanced 3-position	Enhanced 3-position	Enhanced 3-position	Traditional 3-position	Traditional 3-position

## LC-435S / LC-435M / LC-435L / LC-435XL FABRIC OPTIONS

## FEATURES

### Cosi Fabrics



Mocha



Gravel



Blue  
Diamond



Syrah

### Sta-Kleen<sup>1</sup>



Chestnut

- Easy-to-use toggle hand control
- Three-position lift recliners
  - *Enhanced three-position on small, medium, and large for additional resting positions*
- Integrated battery backup in case of power failure
- Chaise pad design fully supports the legs to eliminate pressure points
- Small, medium, and large models feature a cup holder, armrest storage with USB-A/USB-C charging ports, and magnetic hand control dock on both sides
- XL and XXL models feature a USB charger in the hand control, 2-amp lithium battery backup, and are made in the USA of foreign and domestic parts

## LC-435XXL FABRIC OPTIONS

### Cosi Fabrics



Mocha



Gravel

### Sta-Kleen<sup>1</sup>



Chestnut

## OPTIONS & ACCESSORIES

- Lithium battery backup (standard on XL and XXL)
- Head and arm covers
- Non-skid leg levelers
- Cleaning kit

Evolution Collection lift chairs are FDA Class II Medical Devices designed to aid individuals with mobility impairments.

Sitting Pretty™



pridemobility.com

800.800.8586



NOTE: Measurements may vary +/- 1". The information contained herein is correct at the time of publication; we reserve the right to alter specifications without prior notice.

1) Additional charges will apply for this fabric.